

The truth is:

There is a lot to get used to
in the beginning

Get off to a good start
with the SpeediCath®
family of catheters



Understanding users' lives in full was what founded Coloplast more than 60 years ago



Nurse Elise Sørensen
conceived the idea of the
world's first adhesive
ostomy bag



Founder Aage Louis-
Hansen and his wife
Johanne developed and
created the ostomy bag

The SpeediCath® family of catheters *is designed with users' needs in mind*

All SpeediCath® catheters come with a unique hydrophilic coating, featuring our **Triple Action Coating Technology** for protection of the urethra and reduced risk of UTIs.*¹



Stays **bonded**
for a long-lasting,
even coating without
dry spots



Stays **smooth**
for easy insertion
and reduced friction*



Stays **hydrated**
so it is always
ready-to-use

*compared to uncoated catheters

SpeediCath® for men

*Reimbursement Disclaimer: Coloplast Corp. pr
coverage and payment policies can vary from



No issues passing a catheter



Difficulties passing a catheter

SpeediCath® Soft

13" length

Code	Size
27010	● 10 FR
27012	○ 12 FR
27014	● 14 FR
27016	● 16 FR

A4351*



A4352*

SpeediCath® Flex Coudé Pro



13" length

Code	Size
20021	● 10 FR - Pocket
20022	○ 12 FR - Pocket
20024	● 14 FR - Pocket

13" length

Code	Size
20010	● 10 FR
20012	○ 12 FR
20014	● 14 FR
20016	● 16 FR

You can also consider:

SpeediCath® Standard

14" length

Code	Size
28408	● 8 FR
28410	● 10 FR
28412	○ 12 FR
28414	● 14 FR
28416	● 16 FR
28418	● 18 FR

A4351*



You can also consider:

SpeediCath® Coudé

14" length

Code	Size
28490	● 10 FR
28492	○ 12 FR
28494	● 14 FR
28496	● 16 FR

A4352*



Full or slightly reduced hand dexterity

A4353*

SpeediCath® Flex Set

13" length

Code	Size
28931	● 10 FR
28932	○ 12 FR
28934	● 14 FR
28936	● 16 FR

New



Reduced or greatly reduced hand dexterity

A4353*

SpeediCath® Compact Set

13.2" length

Code	Size
28422	○ 12/18 FR



You can also consider:

SpeediCath® Soft

13" length

Code	Size
27010	● 10 FR
27012	○ 12 FR
27014	● 14 FR
27016	● 16 FR

A4351*



You can also consider:

SpeediCath® Standard

14" length

Code	Size
28408	● 8 FR
28410	● 10 FR
28412	○ 12 FR
28414	● 14 FR
28416	● 16 FR
28418	● 18 FR

A4351*

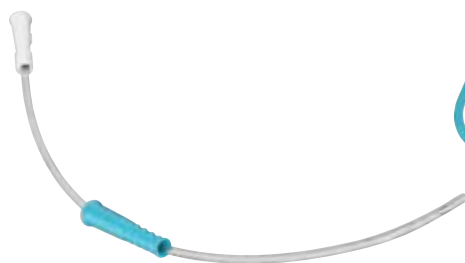


SpeediCath® Soft

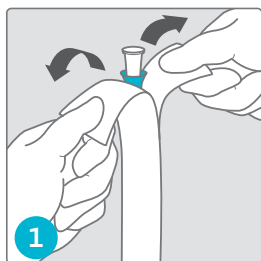


SpeediCath® Soft

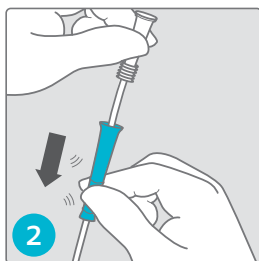
- Insertion grip made from a soft, flexible material designed for a confident and hygienic grip of the catheter, without touching the tube or tip
- Soft catheter that is easy to use the first time and every time
- Instantly ready-to-use with Triple Action Coating Technology



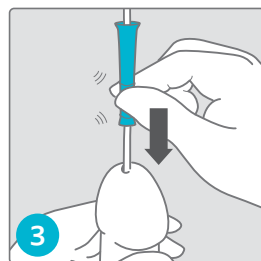
Get off to a good start



1 Hold the packaging upright when opening



2 Release the insertion grip and pinch the wavy section



3 Use a stepwise pinch-and-release technique to insert



Scan this code with your smartphone or tablet to watch a short video about how to use SpeediCath Soft



Prior to use, refer to product labeling for complete product instructions for use, contraindications, warnings and precautions

SpeediCath® Standard

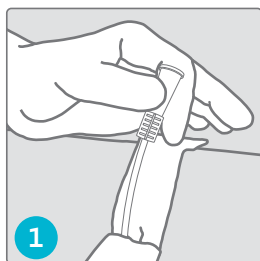


SpeediCath® Standard

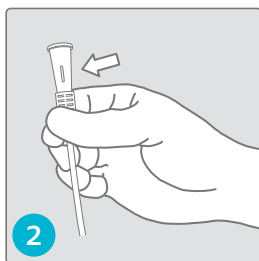
- The first instantly ready-to-use hydrophilic coated catheter featuring Triple Action Coating Technology
- Firm catheter tube designed for no-touch insertion using a drop technique
- Offered in a wide variety of lengths and French sizes to meet different needs
- Can be connected to a standard urine bag or extension tube



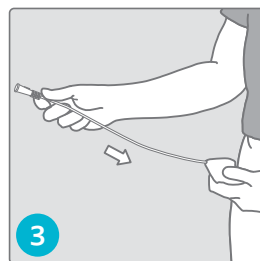
Get off to a good start



1 Hold the packaging upright when opening



2 Pull out the catheter and hold near funnel end



3 Use a drop technique to insert



Scan this code with your smartphone or tablet to watch a short video about how to use SpeediCath Standard



Prior to use, refer to product labeling for complete product instructions for use, contraindications, warnings and precautions

SpeediCath[®]

Flex Coudé Pro

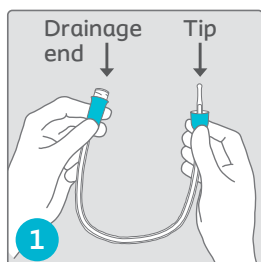


SpeediCath® Flex Coudé Pro

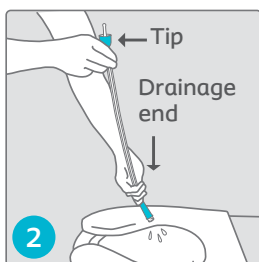
- Dry-sleeve and soft grip support easy and hygienic, no-touch catheterization
- Soft catheter with flexible coudé tip designed for easy and gentle insertion
- Standard male length catheter available in standard and pocket size packaging
- Instantly ready-to-use with Triple Action Coating Technology



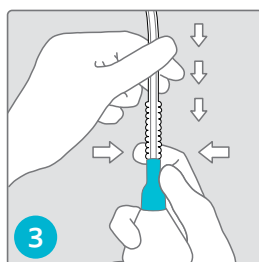
Get off to a good start



1
Twist handles to open and hold both ends upwards (like a 😊)



2
Empty water through the drainage end



3
Insert the catheter by pulling the sleeve and pinching the grip (inch-and-pinch)



Scan this code with your smartphone or tablet to watch a short video about how to use SpeediCath Flex Coudé Pro



Prior to use, refer to product labeling for complete product instructions for use, contraindications, warnings and precautions

SpeediCath® Coudé

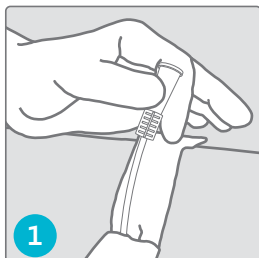


SpeediCath® Coudé

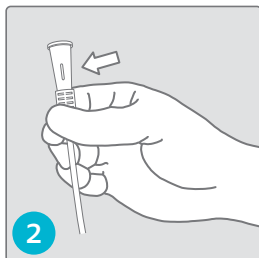
- Firm coudé catheter designed for no-touch insertion using a drop technique
- Instantly ready-to-use with Triple Action Coating Technology



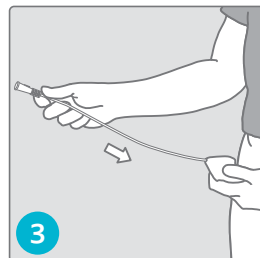
Get off to a good start



1 Hold the packaging upright when opening



2 Pull out the catheter and hold near funnel end



3 Use a drop technique to insert



Prior to use, refer to product labeling for complete product instructions for use, contraindications, warnings and precautions

SpeediCath[®] Flex Set

New

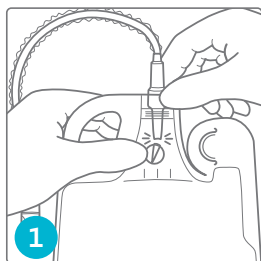


SpeediCath® Flex Set

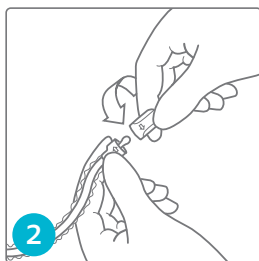
- A new soft catheter and bag solution for men
- Soft catheter with a flexible tip for gentle insertion
- A dry sleeve for a no-touch and hygienic cathing routine
- Integrated bag that is dry to the touch and easy to open and empty so your hands and clothes stay dry.
- Instantly ready-to-use with Triple Action Coating Technology



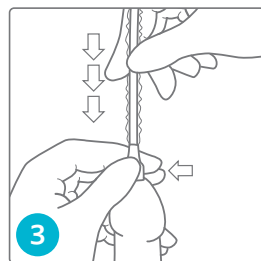
Get off to a good start



1
Break off the tab inside the bag to drain the water-based solution from the sleeve into the bag



2
Unscrew the turquoise cap to expose the catheter tip



3
Insert the catheter by pulling the sleeve and pinching the grip (inch-and-pinch)



Scan this code with your smartphone or tablet to watch a short video about how to use SpeediCath Flex Set



Prior to use, refer to product labeling for complete product instructions for use, contraindications, warnings and precautions

SpeediCath[®] Compact Set

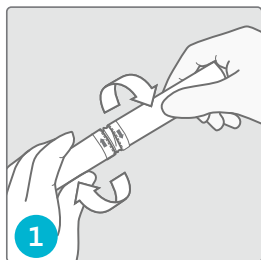


SpeediCath® Compact Set

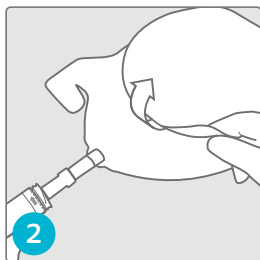
- Compact and discreet all-in-one catheter and bag solution
- Large, dry handle and firm catheter tube for hygienic no-touch insertion
- Easy to use even with reduced hand dexterity
- Instantly ready-to-use with Triple Action Coating Technology



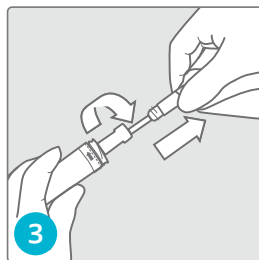
Get off to a good start



Find the arrows on the tube and twist to open



Unfold the bag before removing catheter from the tube



Grasp the handle and twist and pull the catheter out. Use the handle to insert catheter



Scan this code with your smartphone or tablet to watch a short video about how to use SpeediCath Compact Set



Prior to use, refer to product labeling for complete product instructions for use, contraindications, warnings and precautions

SpeediCath[®] *Compact*

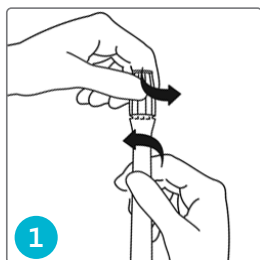


SpeediCath® Compact

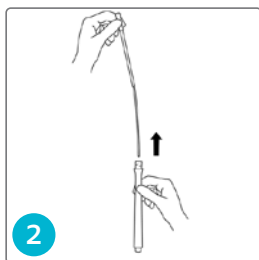
- The most compact catheter for men
- Telescopic catheter design that is easy to control and insert with a hygienic no-touch technique
- Easy to store and bring along with its discreet hard case
- Instantly ready-to-use with Triple Action Coating Technology



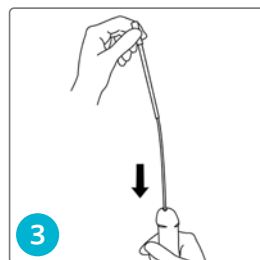
Get off to a good start



1 Hold the catheter vertically with the lid facing upwards and twist to open



2 Pull the white funnel upwards to release the catheter. The catheter is released when you hear a "click"



3 Use a drop technique to insert



Prior to use, refer to product labeling for complete product instructions for use, contraindications, warnings and precautions

SpeediCath® for women

*Reimbursement Disclaimer: Coloplast
Reimbursement, coverage and payment
coverage or payment of products.





A4351*

SpeediCath® Compact Female and Compact Plus

2.75" length

Code	Size
28578	● 8 FR
28580	● 10 FR
28582	○ 12 FR
28584	● 14 FR



3.5" length

Code	Size
28810	● 10 FR
28812	○ 12 FR
28814	● 14 FR



A4353*

SpeediCath® Compact Set

3.5" length

Code	Size
28520	● 10 FR
28522	○ 12 FR
28524	● 14 FR



You can also
consider:

A4351*

SpeediCath® Standard

6" length

Code	Size
28506	● 6 FR
28508	● 8 FR
28510	● 10 FR
28512	○ 12 FR
28514	● 14 FR
28516	● 16 FR



You can also
consider:

A4351*

SpeediCath® Compact Female and Compact Plus

2.75" length

Code	Size
28578	● 8 FR
28580	● 10 FR
28582	○ 12 FR
28584	● 14 FR



3.5" length

Code	Size
28810	● 10 FR
28812	○ 12 FR
28814	● 14 FR



SpeediCath[®] *Compact*

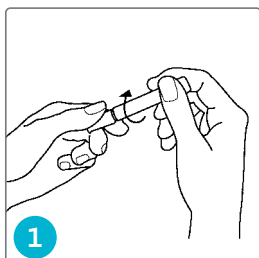


SpeediCath® Compact Female and SpeediCath® Compact Female Plus

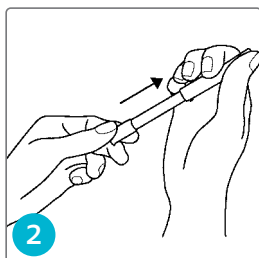
- The most compact catheter for women
- Large and firm handle for a solid grip and a hygienic no-touch insertion
- Available with additional catheter length for women who want discretion but require a slightly longer catheter
- Instantly ready-to-use with Triple Action Coating Technology



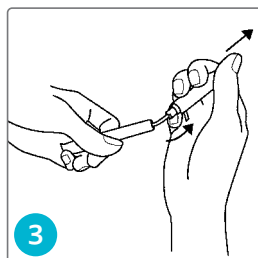
Get off to a good start



1 Hold the product vertically with the grip pointing downward and twist to open



2 Pull apart the outer and inner tube until they lock in the fully extended position. The outer tube is the catheter handle



3 To release the catheter, hold the outer tube firmly and remove the inner tube by gently twisting and pulling it off



Scan this code with your smartphone or tablet to watch a short video about how to use SpeediCath Compact Female



Prior to use, refer to product labeling for complete product instructions for use, contraindications, warnings and precautions

SpeediCath® Standard

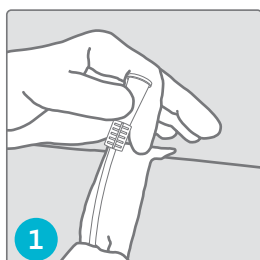


SpeediCath® Standard

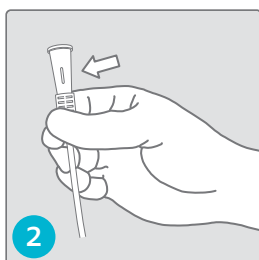
- The first instantly ready-to-use hydrophilic coated catheter featuring Triple Action Coating Technology
- Offered in a wide variety of lengths and French sizes to meet different needs
- Can be connected to a standard urine bag or extension tube



Get off to a good start



Hold the product vertically with the grip pointing downward and twist to open



Pull out the catheter and hold near funnel end to insert



Scan this code with your smartphone or tablet to watch a short video about how to use SpeediCath Standard



Prior to use, refer to product labeling for complete product instructions for use, contraindications, warnings and precautions

SpeediCath[®] *Compact Set*

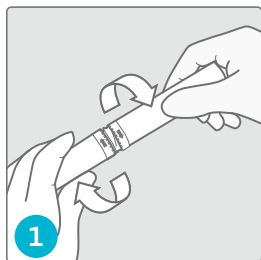


SpeediCath® Compact Set

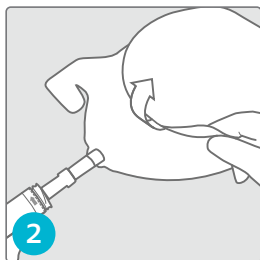
- Compact all-in-one catheter and bag solution designed for the female anatomy
- Large, easy grip handle eliminates need to touch the catheter tube for hygienic catheterization
- Easy-to-use design even with reduced hand dexterity
- Instantly ready-to-use with Triple Action Coating Technology



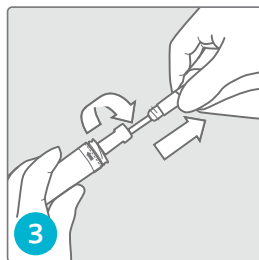
Get off to a good start



Find the arrows on the tube and twist to open



Unfold the bag before removing catheter from the tube



Grasp the handle and twist and pull the catheter out. Use the handle to insert catheter



Scan this code with your smartphone or tablet to watch a short video about how to use SpeediCath Compact Set



Prior to use, refer to product labeling for complete product instructions for use, contraindications, warnings and precautions



Connecting catheter users to confidence

1 Coloplast® Care Advisor



2 Tools for Self-assessment



3 Clinician-validated Education



Call - a Coloplast Care Advisor at **1-866-226-6362**



Email - a request to **care-us@coloplast.com**



Fax - an enrollment form to **1-855-676-2594**



Enroll - at **www.coloplastcareconnect.us**



Visit - our website at **www.bladder.coloplastcare.us**



Scan the QR code with your phone's camera and press "Save Contact" to save Coloplast Care's number in your phone.

1. Rognoni C, Tarricone R. Intermittent catheterisation with hydrophilic and non-hydrophilic urinary catheters: systematic literature review and meta-analyses. BMC Urol. 2017 Jan 10;17(1):4. doi: 10.1186/s12894-016-0191-1. PMID: 28073354; PMCID: PMC5225586.

Prior to use, refer to product labeling for complete product instructions for use, contraindications, warnings and precautions.

SpeediCath® catheters are prescribed for use by patients who require bladder drainage due to urine retention or post void residual volume (PVR). Before use, carefully read all of the instructions. Call your doctor if you think you have a UTI or can't pass the catheter into the bladder. For more information regarding risks, potential complications and product support, call Coloplast Corp. at 1-866-226-6362 and/or consult the company website at www.coloplast.us.

Information from Coloplast® Care is for educational purposes only. It is not intended to substitute for professional medical advice and should not be interpreted to contain treatment recommendations. You should rely on the healthcare professional who knows your individual history for personal medical advice and diagnosis.