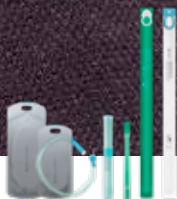


The truth is:

There is no
“one size
fits all”
when it
comes
to catheter
choice



SpeediCath®
designed for you

How to get your catheter of choice



Catheter design varies greatly across companies and individual product lines. Despite these differences, all intermittent catheters are classified into one of three categories: straight tip, coude tip, or closed system/set. Medicare, Medicaid, or your insurance pays based on the category of catheter, not based on the specific brand*. This means:

- Your physician chooses the category of catheter you need
- You and your physician together choose the best catheter brand for you
- Your dealer receives the prescription and supplies the catheter of your choice

When receiving a catheter from a dealer that is In-Network with your health plan, the amount you pay should not be affected by the product you choose within a category. For example, you will pay the same for older, uncoated technology as you would for for an innovative catheter like SpeediCath®, that features our unique Triple Action Coating Technology.

Choose the catheter design that you and your physician decide will best meet your unique needs, and follow the advice of your physician.

*Reimbursement Disclaimer: Coloplast Corp. provides this information for convenience and your general reference only. It does not constitute legal advice or a recommendation regarding clinical practice. Reimbursement, coverage and payment policies can vary from one insurer and region to another and is subject to change without notice. The provider has the responsibility to determine medical necessity and to submit appropriate codes and charges for care provided. Coloplast does not guarantee coverage or payment of products and Coloplast makes no guarantee that the use of this information will prevent differences of opinion or disputes with Medicare, insurers, or other payers as to the correct form of billing or the amount that will be paid. This information is provided for your general information only and is not intended to replace any advice you receive from your own internal or external insurance coverage consultants, reimbursement specialists or legal counsel.

The truth is:

Not all coatings
are the same



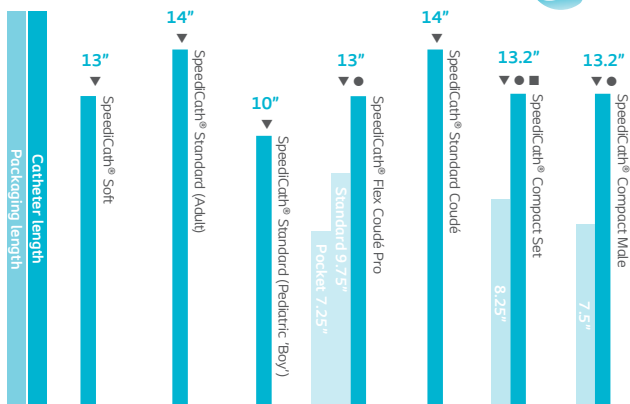
SpeediCath® Catheters with Triple Action Coating Technology

SpeediCath® catheters are available in several options for men, each of which feature our Triple Action Coating Technology. Our unique formula reduces friction for protection of the urethra during insertion and withdrawal**. With its consistent level of hydration and no dry spots, all catheters in the SpeediCath family are instantly ready to use - saving you the time of applying extra lubricant or waiting for your catheter to hydrate.

Hydrophilic – ▼

Compact – ●

Attached bag – ■



Other options are available

Call Coloplast® Care to learn more **1-866-226-6362**

**compared to uncoated catheters

SpeediCath[®]

Soft

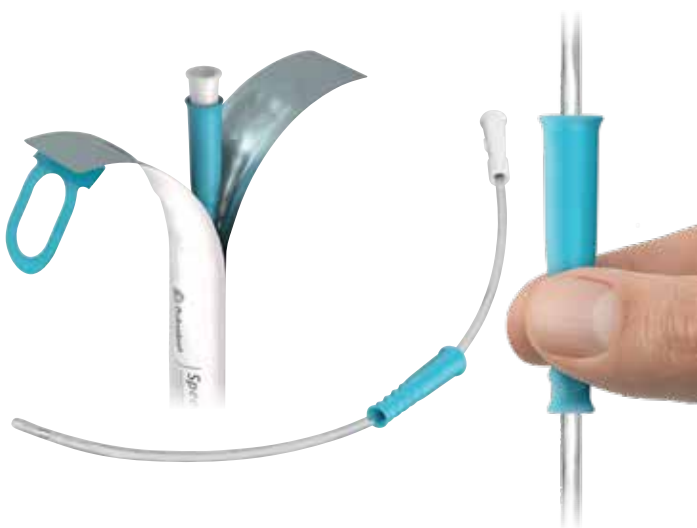


SpeediCath® Soft

SpeediCath® Soft is designed to make catheterization simple and easy with fast preparation and a confident grip.

- Pre-lubricated intermittent catheter that is instantly ready-to-use with a unique hydrophilic coating, eliminating the need for additional lubricants or waiting for a catheter to hydrate
- Insertion grip made from a soft, flexible material designed for a confident and hygienic grip of the catheter, without touching the tube or tip
- Soft catheter that is easy to use the first time and every time
- Not made with natural rubber latex and is DEHP and phthalate free

| Code | Size | Units | Description | HCPCS* |
|-------|---------|-------|-------------|--------|
| 27010 | ● 10 FR | 30 | 13" length | A4351 |
| 27012 | ○ 12 FR | 30 | 13" length | A4351 |
| 27014 | ● 14 FR | 30 | 13" length | A4351 |
| 27016 | ● 16 FR | 30 | 13" length | A4351 |



* See Important Safety Information and HCPCS disclaimer on back page

SpeediCath® Standard



References:

1. Stensballe J. et al. Hydrophilic-coated catheters for intermittent catheterisation reduce urethral micro trauma: a prospective, randomised, participant-blinded, crossover study of three different types of catheters. Eur Urol. Dec 2005;48(6):978-83. doi:10.1016/j.eururo.2005.07.009; a study of 40 users.

SpeediCath® Standard

Intermittent catheter design took a large step forward when Coloplast created SpeediCath®, the first ready-to-use pre-lubricated catheter on the market. Like all products in the SpeediCath family, it features our unique Triple Action Coating Technology designed to reduce friction for protection of the urethra compared to uncoated catheters. Users have responded very favorably to hydrophilic catheters, as shown in a study of 40 participants, where 93% of them favored hydrophilic catheters over their uncoated counterparts¹.

Male

| Code | Size | Units | Description | HCPCS* |
|-------|---------|-------|-------------|--------|
| 28408 | ● 8 FR | 30 | 14" length | A4351 |
| 28410 | ● 10 FR | 30 | 14" length | A4351 |
| 28412 | ○ 12 FR | 30 | 14" length | A4351 |
| 28414 | ● 14 FR | 30 | 14" length | A4351 |
| 28416 | ● 16 FR | 30 | 14" length | A4351 |
| 28418 | ● 18 FR | 30 | 14" length | A4351 |

Pediatric

| | | | | |
|-------|---------|----|-----------|-------|
| 28706 | ● 6 FR | 30 | 6" length | A4351 |
| 28708 | ● 8 FR | 30 | 6" length | A4351 |
| 28710 | ● 10 FR | 30 | 6" length | A4351 |

Boy

| | | | | |
|-------|---------|----|------------|-------|
| 28606 | ● 6 FR | 30 | 10" length | A4351 |
| 28608 | ● 8 FR | 30 | 10" length | A4351 |
| 28610 | ● 10 FR | 30 | 10" length | A4351 |
| 28612 | ○ 12 FR | 30 | 10" length | A4351 |

Male with Insertion Supplies

| | | | | |
|-------|---------|-----|------------|-------|
| 28481 | ● 8 FR | 100 | 14" length | A4353 |
| 28482 | ● 10 FR | 100 | 14" length | A4353 |
| 28483 | ○ 12 FR | 100 | 14" length | A4353 |
| 28484 | ● 14 FR | 100 | 14" length | A4353 |
| 28485 | ● 16 FR | 100 | 14" length | A4353 |
| 28486 | ● 18 FR | 100 | 14" length | A4353 |



* See Important Safety Information and HCPCS disclaimer on back page

SpeediCath® Flex Coudé Pro



SpeediCath® Flex Coudé Pro

SpeediCath® Flex Coudé Pro is a soft, flexible catheter with a dry-sleeve and a curved tip. It has a range of features designed to make every step of catheterization easy.



- Hygienic as it is instantly ready-to-use with a dry-sleeve and a soft squeeze grip
- Flexible catheter with a fixed, curved tip which can bend to follow the curves of the urethra
- Discreet standard length catheter packaged in two compact sizes
- Soft catheter ensures easy handling
- Comes in an Easy-Pack that is easy to open, easy to close and completely aluminum-free, reducing its CO₂ footprint
- Standard and pocket size packaging

SpeediCath® Flex Coudé Pro

Introducing an easy-to-use coudé tip hydrophilic intermittent catheter.



| Code | Size | Units | Description | HCPCS* |
|-------|---------|-------|-------------------|--------|
| 20010 | ● 10 FR | 30 | 13" length | A4352 |
| 20012 | ○ 12 FR | 30 | 13" length | A4352 |
| 20014 | ● 14 FR | 30 | 13" length | A4352 |
| 20016 | ● 16 FR | 30 | 13" length | A4352 |
| 20021 | ● 10 FR | 30 | 13" length Pocket | A4352 |
| 20022 | ○ 12 FR | 30 | 13" length Pocket | A4352 |
| 20024 | ● 14 FR | 30 | 13" length Pocket | A4352 |

* See Important Safety Information and HCPCS disclaimer on back page

SpeediCath® Coudé Tip

For some people, catheterizing becomes more difficult over time due to changes in anatomy. Enlarged prostate, strictures, false passages, and scar tissue can make a routine procedure harder. If this sounds familiar to you, talk to your doctor about coudé tip catheters.

SpeediCath Coudé tip is a ready-to-use pre-lubricated coudé catheter, which makes additional lubricant unnecessary and helps minimize time spent in the bathroom.



SpeediCath® Standard Tapered Coudé Tip

| Code | Size | Units | Description | HCPCS* |
|-------|---------|-------|-------------|--------|
| 28490 | ● 10 FR | 30 | 14" length | A4352 |
| 28492 | ○ 12 FR | 30 | 14" length | A4352 |
| 28494 | ● 14 FR | 30 | 14" length | A4352 |
| 28496 | ● 16 FR | 30 | 14" length | A4352 |

* See Important Safety Information and HCPCS disclaimer on back page

SpeediCath® Compact Set



SpeediCath® Compact Set

Coloplast revolutionized the traditional catheter and bag combination by packaging both the catheter and bag into a tight cylindrical tube. SpeediCath® Compact Set is easily carried with you and stored, no matter where you go. The compact package is made possible by the telescoping catheter inside (12 FR telescopes to 18 FR and is appropriate for that size range). The integrated bag has a surprisingly large 750mL capacity, and can be disposed of as discreetly as it is stored.

SpeediCath® Compact Set - Male

| Code | Size | Units | Description | HCPCS* |
|-------|------------|-------|---------------------------------------|--------|
| 28422 | ○ 12/18 FR | 20 | 13.2" length includes catheter length | A4353 |



reddot design award
winner 2013

* See Important Safety Information and HCPCS disclaimer on back page

SpeediCath[®]

Compact Male



SpeediCath® Compact Male

SpeediCath® Compact Male is the most compact catheter available for men, perfect for use at home and on the go. And, like all SpeediCath catheters, it's pre-lubricated hydrophilic coating is ready when you need it, right out of the package.

SpeediCath® Compact Male with SpeediBag®

| Code | Size | Units | Description | HCPCS* |
|-------|------------|-------|------------------------------|--------|
| 28702 | O 12/18 FR | 20 | 13.2" length includes funnel | A4353 |

Includes optional 750mL urine collection bag



* See Important Safety Information and HCPCS disclaimer on back page

To empower
users, we take
time to listen



In one year, we conducted

230 hours
of interviews



in **9** countries

with
116 catheter users



The truth is:

I was afraid of
hurting myself

*41% of male catheter
users have mental
barriers to inserting
a catheter²*

Jason*
catheter user

*Coloplast has compensated this user to share his product experience. Each person's situation is unique so your experience may not be the same. Talk to your healthcare provider about whether this product is right for you.

2. Coloplast, Market study, IC user research, 2016, Data-on-file (PM-06287)



Connecting you



Coloplast® Care Program

Support for the transition home

Coloplast® Care guides you to a better life through simple, straightforward advice on bladder management. We offer a helping hand whenever you need product and lifestyle support and give you tips and tools you need to take control of bladder health.



Clinician-validated education

Clinician-validated education provided via website, personalized emails and Care kit



My Continence Check

Keep track of your bladder health through regular self-assessment



Phone support

Individualized product and lifestyle support



Product access and guidance

Access to product samples* and support to help find a supplier that meets your insurance needs

*Samples available with valid prescription only. Limitations apply.

to confidence

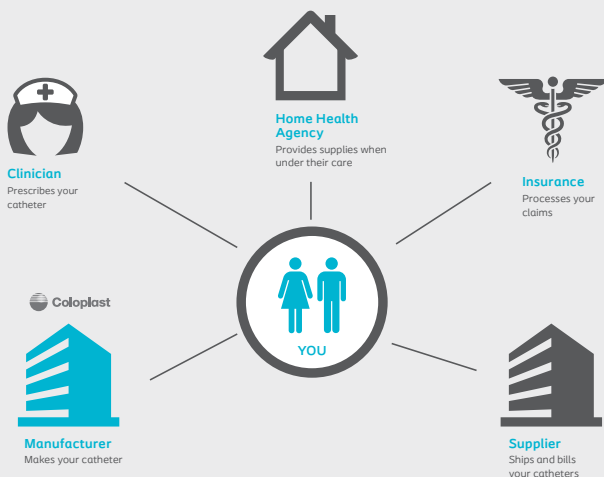


Enroll in Coloplast® Care today!

Our team of dedicated Care Advisors are the foundation of the Coloplast® Care program. Advisors are available from 8 a.m. - 6 p.m. CST, Monday through Friday. You may also visit the Coloplast website at bladder.coloplastcare.us 24 hours a day.

www.bladder.coloplastcare.us | 1-866-226-6362

We help you navigate the medical supplies maze



Coloplast develops products and services that make life easier for people with very personal and private medical conditions. Working closely with the people who use our products, we create solutions that are sensitive to their special needs. We call this intimate healthcare.

Our business includes ostomy care, continence care, wound and skin care and urology care. We operate globally and employ more than 12,000 employees.

Prior to use, refer to product labeling for complete product instructions for use, contraindications, warnings and precautions.

SpeediCath® catheters are prescribed for use by patients who require bladder drainage due to urine retention or post void residual volume (PVR). Before use, carefully read all of the instructions. Call your doctor if you think you have a UTI or can't pass the catheter into the bladder. For more information regarding risks, potential complications and product support, call Coloplast Corp. at 1-866-226-6362 and/ or consult the company website at www.coloplast.us.

***Reimbursement Disclaimer:** Coloplast Corp. provides this information for your general reference and related to the reimbursement of Coloplast products only. Reimbursement, coverage and payment policies can vary from one insurer and region to another, and may change over time. Coloplast does not guarantee coverage or payment of products.

Information from Coloplast® Care is for educational purposes only. It is not intended to substitute for professional medical advice and should not be interpreted to contain treatment recommendations. You should rely on the healthcare professional who knows your individual history for personal medical advice and diagnosis.

[Ostomy Care / Continence Care / Wound & Skin Care / Interventional Urology](#)

Coloplast Corp. Minneapolis, MN 55411 / 1-800-533-0464

www.coloplast.us The Coloplast logo is a registered trademark of Coloplast A/S.
© 2022 Coloplast Corp. All rights reserved.

