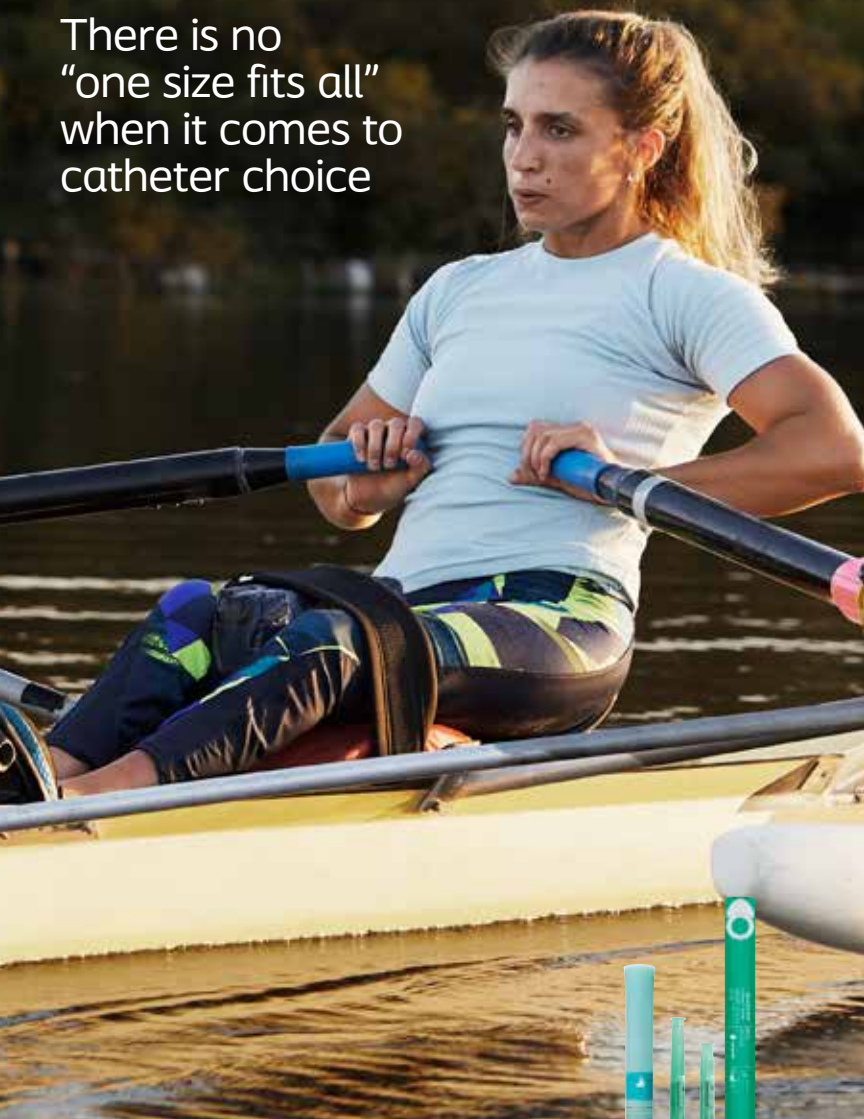


# The truth is:

There is no  
"one size fits all"  
when it comes to  
catheter choice



**Coloplast**

**SpeediCath®**  
designed for you



**SpeediCath®**  
designed for you

## How to get your catheter of choice

Catheter design varies greatly across companies and individual product lines. Despite these differences, all intermittent catheters are classified into one of three categories: straight tip, coudé tip or closed system/set. The insurance provider (Medicare, Medicaid or private insurance plan) pays based on the category of catheter, not based upon the specific brand.\* This means:

- Your physician prescribes the category (straight tip, coudé tip or closed system/set) of catheter you need
- You and your physician together choose the best catheter brand for you based on your unique needs
- Your dealer receives the prescription and supplies the catheter of your choice

When receiving a catheter from a dealer that is In-Network with your health plan, the amount you pay will not be affected by the product you choose within a category. For example, you will pay the same for uncoated, older technology as you would for an innovative catheter like SpeediCath® that features our unique Triple Action Coating Technology.

**Choose the catheter design that you and your physician decide will best meet your unique needs, and follow the advice of your physician.**

\*Reimbursement Disclaimer: Coloplast Corp. provides this information for convenience and your general reference only. It does not constitute legal advice or a recommendation regarding clinical practice. Reimbursement, coverage and payment policies can vary from one insurer and region to another and is subject to change without notice. The provider has the responsibility to determine medical necessity and to submit appropriate codes and charges for care provided. Coloplast does not guarantee coverage or payment of products and Coloplast makes no guarantee that the use of this information will prevent differences of opinion or disputes with Medicare, insurers, or other payers as to the correct form of billing or the amount that will be paid. This information is provided for your general information only and is not intended to replace any advice you receive from your own internal or external insurance coverage consultants, reimbursement specialists or legal counsel.

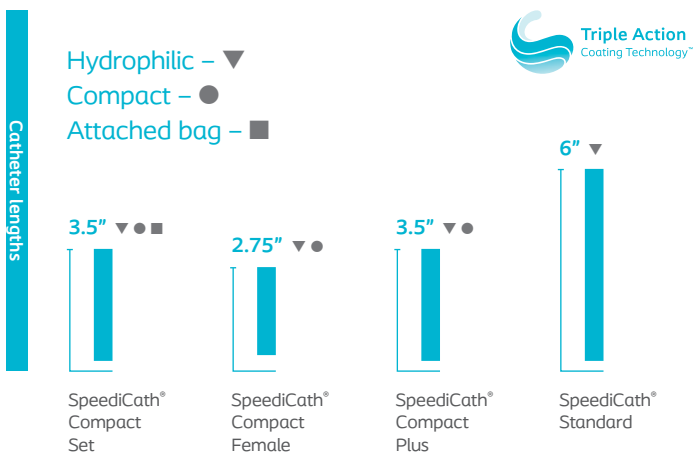
# The truth is:

Not all coatings  
are the same



## SpeediCath® Catheters with Triple Action Coating Technology

SpeediCath® catheters are available in several options for women, each of which feature our Triple Action Coating Technology. Our unique formula reduces friction and protects your urethra during insertion and withdrawal.\* With its consistent level of hydration and no dry spots, all catheters in the SpeediCath family are instantly ready to use - saving you the time of applying extra lubricant or waiting for your catheter to hydrate.



**Other options are available**

Call Coloplast® Care to learn more **1-866-226-6362**

\*compared to uncoated catheters

# The truth is:

When you're out and about,  
an all-in-one solution is just easy



# SpeediCath® Compact Set

Coloplast revolutionized the traditional catheter and bag combination by packaging both the catheter and bag into a tight cylindrical tube. SpeediCath® Compact Set is easily carried with you and stored, no matter where you go. The integrated bag has a surprisingly large 750mL capacity, and can be disposed of as discreetly as it is stored.

## SpeediCath® Compact Set

### Female

Code	Size	Units	Description	HCPCS*
28520	● 10 FR	20	3.5" length	A4353
28522	○ 12 FR	20	3.5" length	A4353
28524	● 14 FR	20	3.5" length	A4353



\* See Important Safety Information and HCPCS disclaimer on back page

# The truth is:

It's small and  
convenient too



# SpeediCath® Compact

SpeediCath Compact is the discreet and easy to use catheter for women. It is the first catheter designed to suit the female anatomy. The easy-grip handle allows for hygienic no-touch insertion and control, and it is convenient and easy to use. SpeediCath® Compact Plus is available for women who want discretion but need a slightly longer catheter.

## SpeediCath® Compact

Code	Size	Units	Description	HCPCS*
28578	● 8 FR	30	2.75" length	A4351
28580	● 10 FR	30	2.75" length	A4351
28582	○ 12 FR	30	2.75" length	A4351
28584	● 14 FR	30	2.75" length	A4351

## SpeediCath® Compact Plus

Code	Size	Units	Description	HCPCS*
28810	● 10 FR	30	3.5" length	A4351
28812	○ 12 FR	30	3.5" length	A4351
28814	● 14 FR	30	3.5" length	A4351



\* See Important Safety Information and HCPCS disclaimer on back page.

# The truth is:

There is a lot to get  
used to in the beginning





# SpeediCath® Standard

Intermittent catheter design took a large step forward when Coloplast created SpeediCath®, the first instantly ready-to-use pre-lubricated catheter on the market. Like all products in the SpeediCath family, it features our unique Triple Action Coating Technology designed to reduce friction and protect your urethra.\*\*

## SpeediCath® Single Units

Code	Size	Units	Description	HCPCS*
------	------	-------	-------------	--------

### Female

28506	● 6 FR	30	6" length	A4351
28508	● 8 FR	30	6" length	A4351
28510	● 10 FR	30	6" length	A4351
28512	○ 12 FR	30	6" length	A4351
28514	● 14 FR	30	6" length	A4351
28516	● 16 FR	30	6" length	A4351

### Pediatric

28706	● 6 FR	30	6" length	A4351
28708	● 8 FR	30	6" length	A4351
28710	● 10 FR	30	6" length	A4351

## SpeediCath® with Insertion Supplies

Code	Size	Units	Description	HCPCS*
28499	● 6 FR	100	6" length	A4353
28500	● 8 FR	100	6" length	A4353
28501	● 10 FR	100	6" length	A4353
28502	○ 12 FR	100	6" length	A4353
28503	● 14 FR	100	6" length	A4353
28504	● 16 FR	100	6" length	A4353



\* See Important Safety Information and HCPCS disclaimer on back page.

\*\*compared to uncoated catheters



# Connecting you



## Coloplast® Care Program

### Support for the transition home

Coloplast® Care guides you to a better life through simple, straightforward advice on bladder management. We offer a helping hand whenever you need product and lifestyle support and we give you tips and tools you need to take control of bladder issues.



#### Clinician-validated education

Clinician-validated education provided via website, personalized emails and Care kit



#### My Continence Check

Keep track of your bladder health through regular self-assessment



#### Phone support

Individualized product and lifestyle support



#### Product access and guidance

Access to product samples\* and support to help find a supplier that meets your insurance needs

\*Samples available with valid prescription only. Limitations apply.

# to confidence

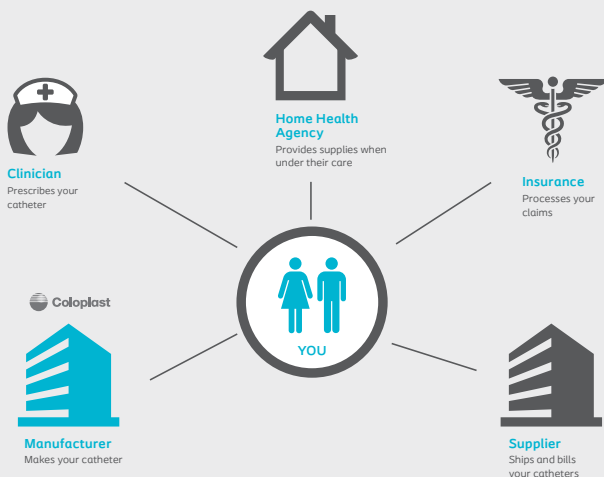


## Enroll in Coloplast® Care today!

Our team of dedicated Care Advisors are the foundation of the Coloplast® Care program. Advisors are available from 8 a.m. - 6 p.m. CST, Monday through Friday, and speak English and Spanish. You may also visit the Coloplast website at [bladder.coloplastcare.us](http://bladder.coloplastcare.us) 24 hours a day.

[www.bladder.coloplastcare.us](http://www.bladder.coloplastcare.us) | 1-866-226-6362

We help you navigate the medical supplies maze



Coloplast develops products and services that make life easier for people with very personal and private medical conditions. Working closely with the people who use our products, we create solutions that are sensitive to their special needs. We call this intimate healthcare.

Our business includes ostomy care, continence care, wound and skin care and urology care. We operate globally and employ more than 12,000 employees.

Prior to use, refer to product labeling for complete product instructions for use, contraindications, warnings and precautions.

SpeediCath® catheters are prescribed for use by patients who require bladder drainage due to urine retention or post void residual volume (PVR). Before use, carefully read all of the instructions. Call your doctor if you think you have a UTI or can't pass the catheter into the bladder. For more information regarding risks, potential complications and product support, call Coloplast Corp. at 1-866-226-6362 and/ or consult the company website at [www.coloplast.us](http://www.coloplast.us).

**\*Reimbursement Disclaimer:** Coloplast Corp. provides this information for your general reference and related to the reimbursement of Coloplast products only. Reimbursement, coverage and payment policies can vary from one insurer and region to another, and may change over time. Coloplast does not guarantee coverage or payment of products.

Information from Coloplast® Care is for educational purposes only. It is not intended to substitute for professional medical advice and should not be interpreted to contain treatment recommendations. You should rely on the healthcare professional who knows your individual history for personal medical advice and diagnosis.

[Ostomy Care / Continence Care / Wound & Skin Care / Interventional Urology](#)

Coloplast Corp. Minneapolis, MN 55411 / 1-800-533-0464

[www.coloplast.us](http://www.coloplast.us) The Coloplast logo is a registered trademark of Coloplast A/S.  
© 2022 Coloplast Corp. All rights reserved.

