

SenSura® Mio Kids

1-piece drainable ostomy pouch



Prepare

1



Measure the stoma using the stoma measuring guide



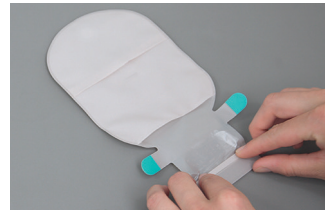
Using the measuring guide, trace and draw the shape of the stoma on the barrier



Use a pair of small curved scissors when cutting the hole in the barrier



Place the pouch on a flat surface with the adhesive side down



Close the outlet by folding the bottom of the outlet upwards three times



Fold the two tabs inwards to secure the VELCRO® Brand fasteners



The outlet can be hidden away by using the VELCRO® Brand fastener dot immediately above the outlet



Thoroughly clean the stoma and the surrounding skin. The skin must be completely clean, dry, and free of oily substances

Apply

2



Peel off the release liner and discard it safely out of reach of children



Align the barrier around the stoma. To prevent any harm, be sure that the barrier does not touch the stoma



Begin applying pressure in the area around the stoma and lightly press the adhesive



Run a finger all the way around the stoma to ensure that the adhesive seals



Apply light pressure on the pouch

Empty

3



Open the outlet and empty the pouch into the toilet



Clean the outlet, for example with toilet paper



Fold and resecure the outlet after you have emptied the pouch

Remove

4



Gently pull the removal ear away from the skin



Peel the adhesive slowly downwards



Tip: Use Brava® Adhesive Remover to gently remove the barrier

Prior to use, refer to the product 'Instructions for Use' for intended use and relevant safety information.

Ostomy Care / Continence Care / Wound & Skin Care / Interventional Urology

Coloplast Corp. Minneapolis, MN 55411 / 1-800-533-0464
www.coloplast.us The Coloplast logo is a registered trademark of Coloplast A/S. © 2022 Coloplast Corp. All rights reserved.

 **Coloplast**

PM-23784 09.22