

SenSura® Mio Kids

2-piece Flex drainable ostomy pouch



Prepare

1



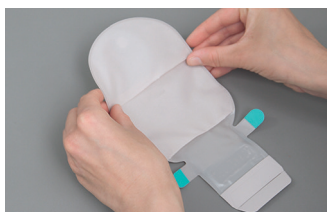
Measure the stoma using the stoma measuring guide



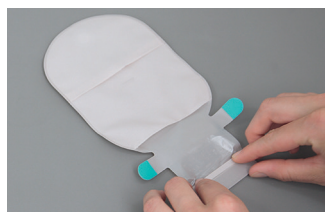
Using the measuring guide, trace and draw the shape of the stoma on the barrier



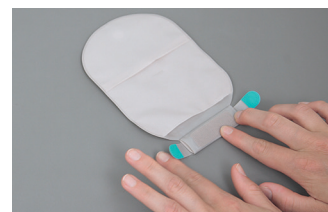
Use a pair of small curved scissors when cutting the hole in the barrier



Place the pouch on a flat surface with the adhesive side down



Close the outlet by folding the bottom of the outlet upwards three times



Fold the two tabs inwards to secure the VELCRO® Brand fasteners



The outlet can be hidden by using the VELCRO® Brand fastener dot above the outlet



Thoroughly clean the stoma and skin. Ensure the skin is clean, dry, and free of oily substances

Apply

2



Peel off the release liner and discard it safely out of reach of children



Align the barrier around the stoma. Ensure the barrier doesn't touch the stoma



Apply light pressure to the barrier to ensure fast adhesion



Run a finger all the way around the stoma to ensure that the adhesive seals



Ensure the barrier is dry and clean



Remove the protective film from the adhesive ring of the pouch



Align the bottom of the pouch coupling with the flange located on the barrier



Apply light pressure on the pouch and barrier



Smooth the coupling upwards all the way around the coupling ring

Empty

3



Open the outlet and empty the pouch into the toilet



Clean the outlet, for example with toilet paper



Fold and resecure the outlet after you have emptied the pouch

Remove

4



Remove the pouch: Apply light pressure to the flange of the barrier with one hand



Remove the pouch with the other hand by pulling the tab on the pouch slowly



Remove the barrier: Gently pull the removal ear away from the skin



Peel the adhesive slowly downwards



Tip: Use Brava® Adhesive Remover to gently remove the barrier

Prior to use, refer to the product 'Instructions for Use' for intended use and relevant safety information.